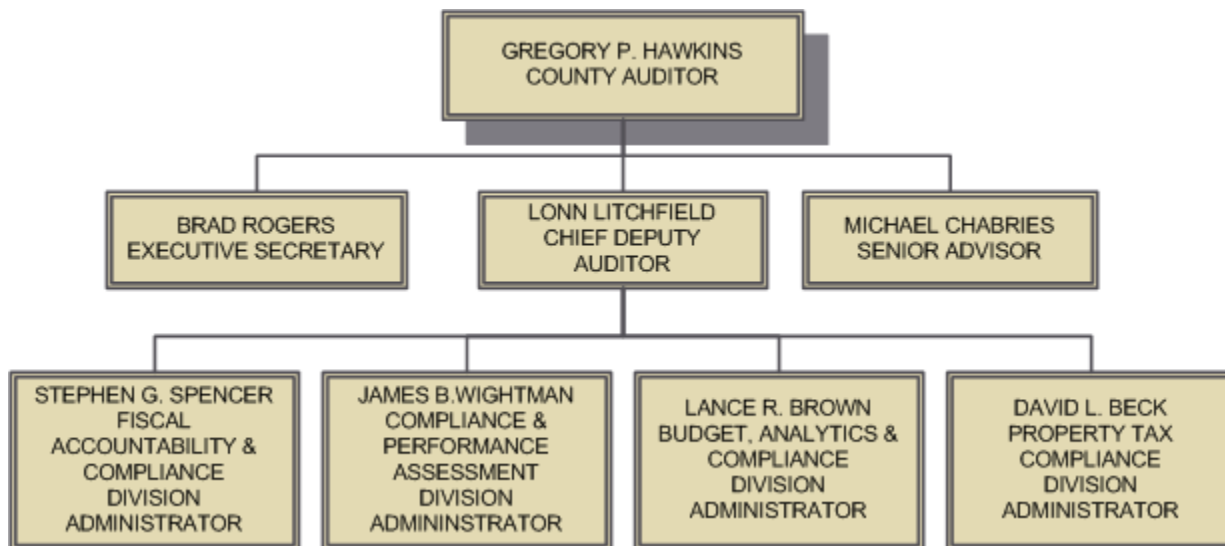




Salt Lake County Auditor Organization Chart

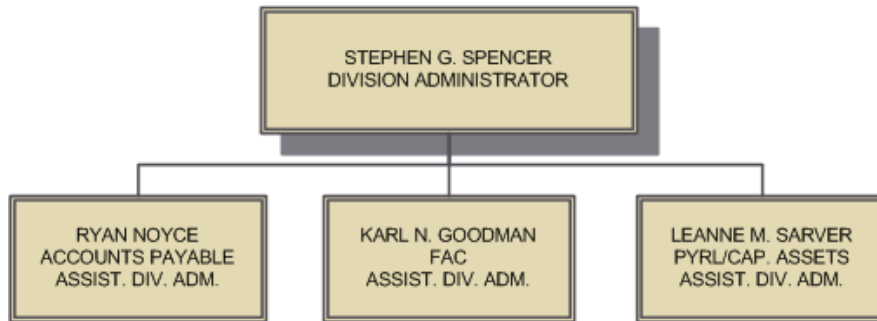
Auditor & Senior Staff



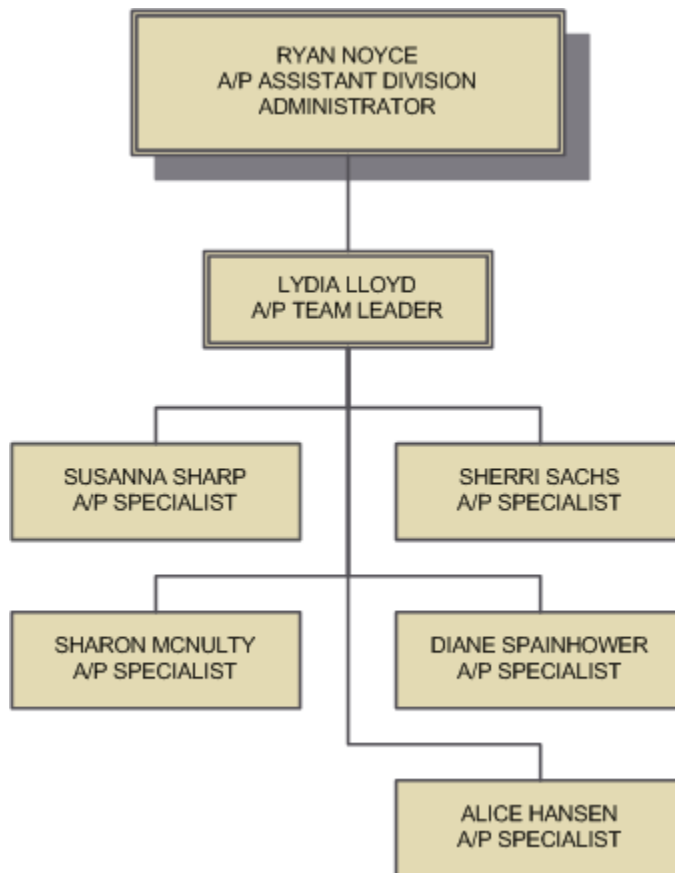


Gregory P. Hawkins
Auditor

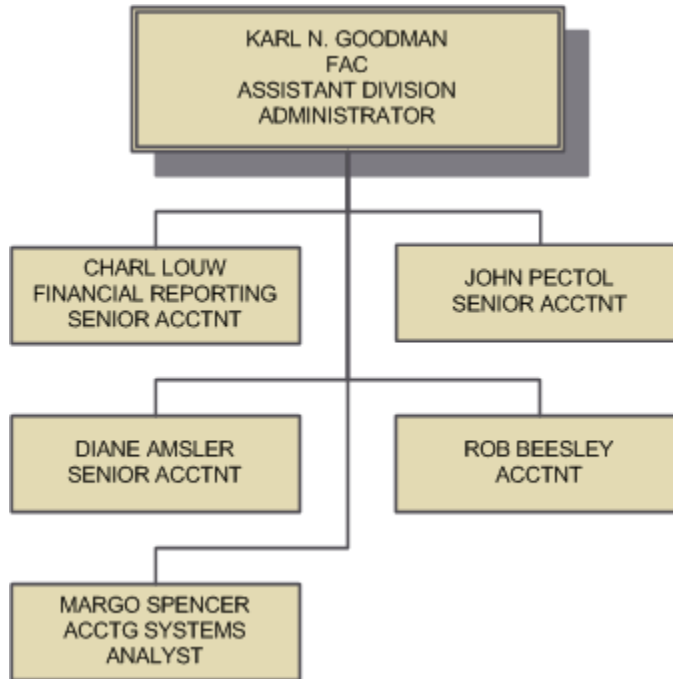
Division of Fiscal Accountability & Compliance (FAC)



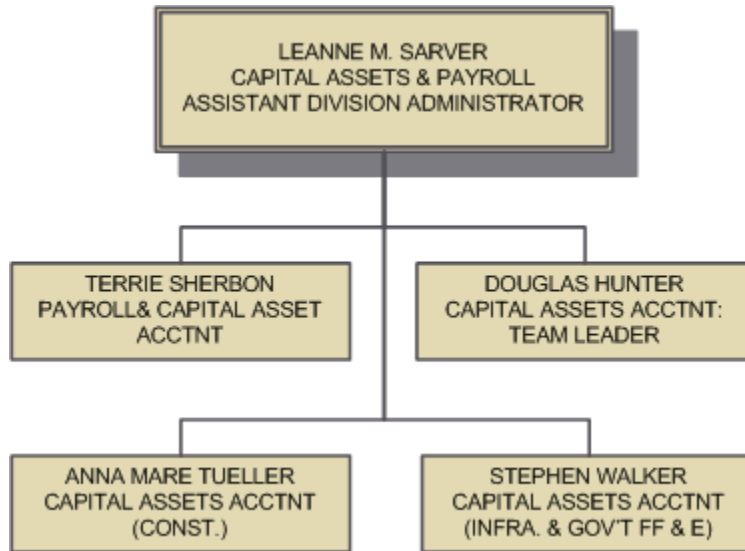
Accounts Payable Section



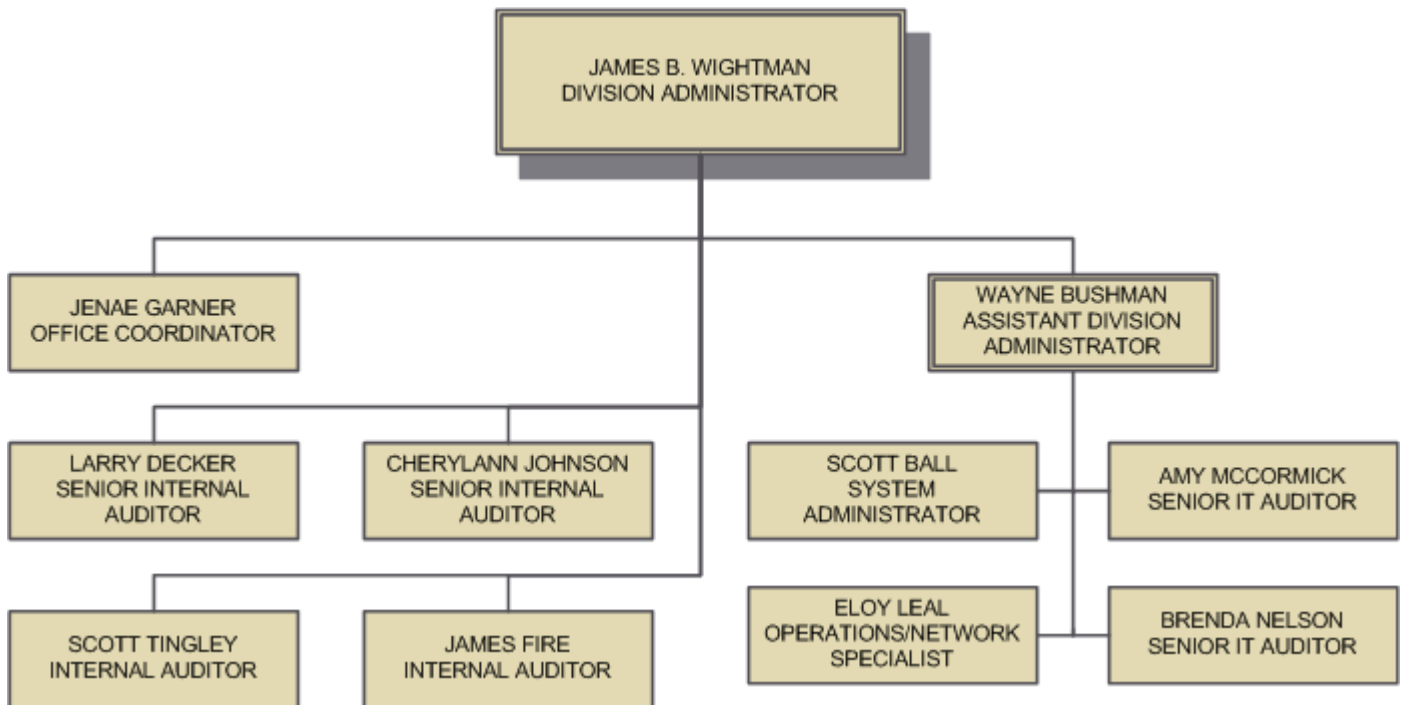
Accounting Section



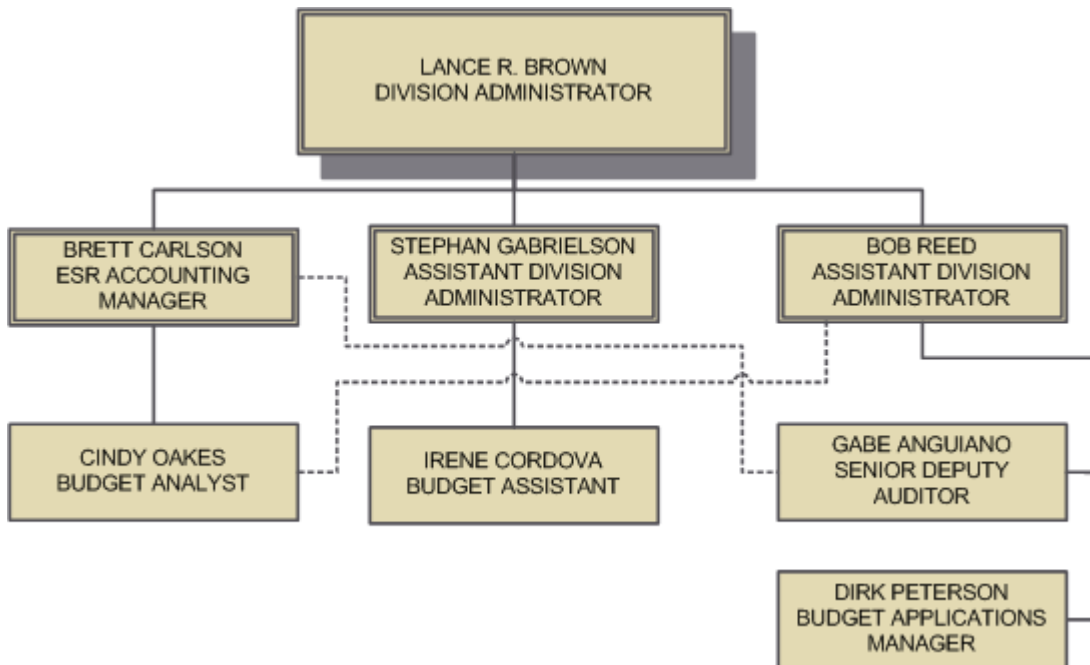
Capital Assets & Payroll Section



Division of Compliance & Performance Assessment (CPA)



Division of Budget, Analytics & Compliance (BAC)



Division of Property Tax Compliance (PTC)

